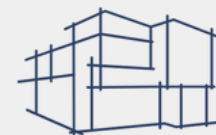




4033 Hawthorne

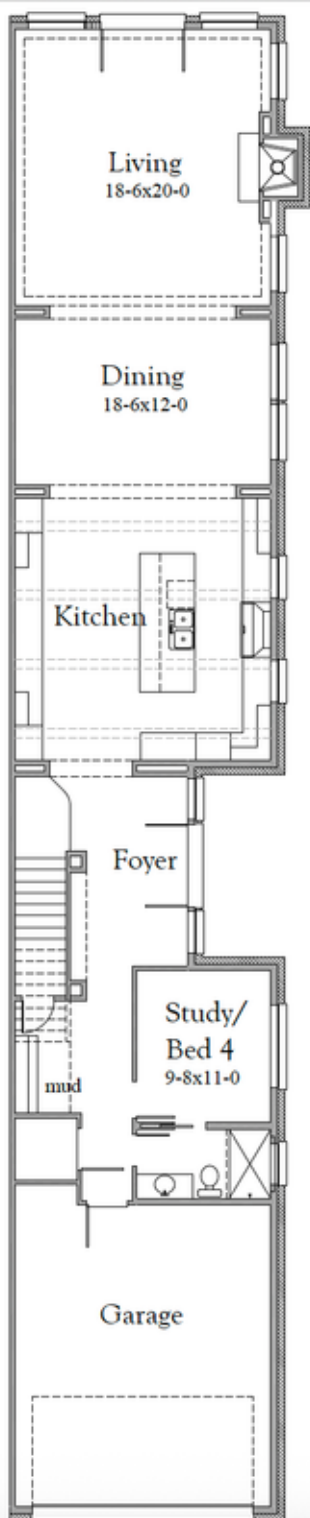


WESTBRIDGE HOMES  
LUXURY HOME BUILDER

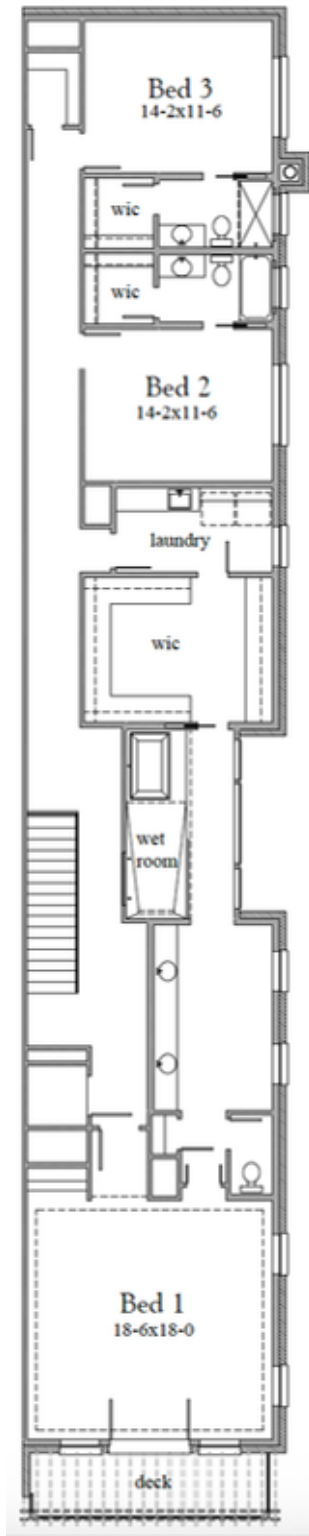
# Welcome to 4033 Hawthorne

Westbridge Homes is proud to offer this newly designed home with an innovative floor plan.

This 4-bedroom, 4-bath single-family attached home offers two full levels of thoughtfully designed living space, ideal for a low-maintenance, lock-and-leave lifestyle. The primary suite is privately situated on the second floor alongside two additional bedrooms, creating a comfortable and efficient layout for everyday living or hosting guests. A first-floor bedroom provides flexible use as a guest suite or home office, perfect for today's live-work needs.

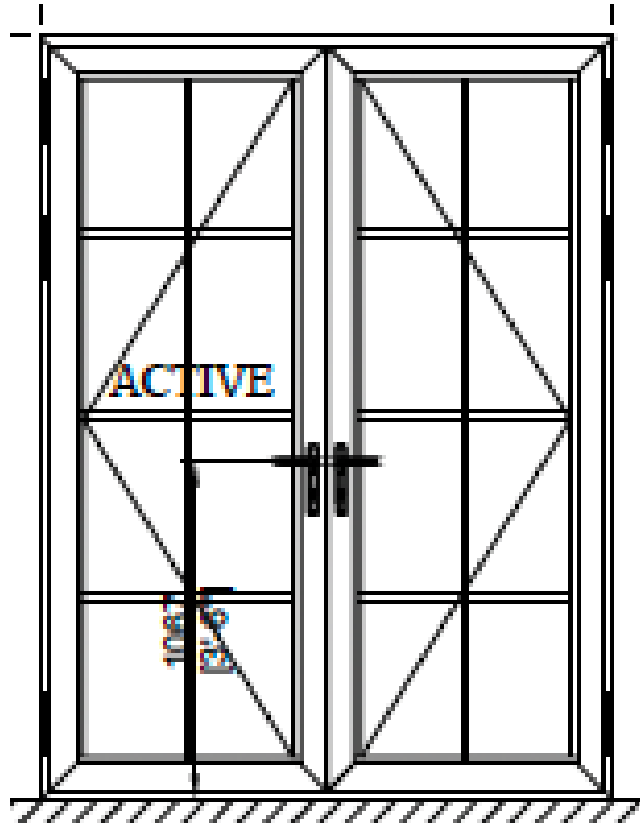


# 1st Floor



# 2nd Floor

# exterior details



Metal Front Door



Gas Lanterns



Modern  
Address Numbers



30yr Composition  
Shingle



Keyless  
Entry Set

# interior details

---



7.5" WHITE OAK



INTERIOR DOOR HARDWARE  
BALDWIN: SQUARE RESERVE  
FINISH: SATIN NICKEL

DOOR HINGES TO MATCH



INTERIOR PAINT  
WALL + CABINET  
SW 7757  
REFLECTIVE WHITE  
FINISH: FLAT ON WALLS

(UNLESS NOTED)



INTERIOR DOOR STYLE  
MASONITE: LINCOLN PARK

# kitchen

---

Burner



Wolf

Double Oven



Wolf

Hood



Wolf

Refrigerator



SubZero

# kitchen

---



Brizzo

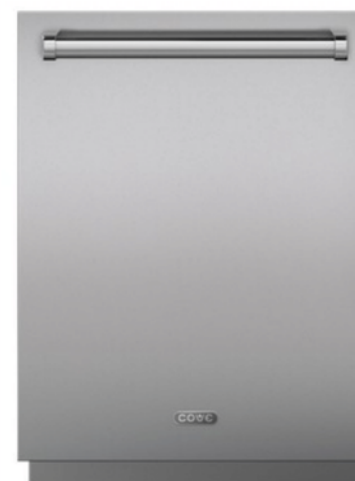


Microwave Drawer



Wolf

Dishwasher



Cove

# kitchen

---



for reference only  
final product may vary

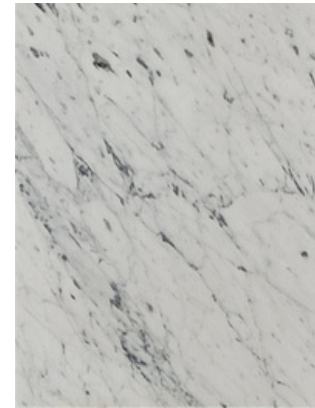
# Primary Bath



Inspiration Picture



Vanity with Marble countertop



Wall/Floor Tile



Shower Floor Tile



Brass Trims



Lighting



Mirror

# Bath 2

---



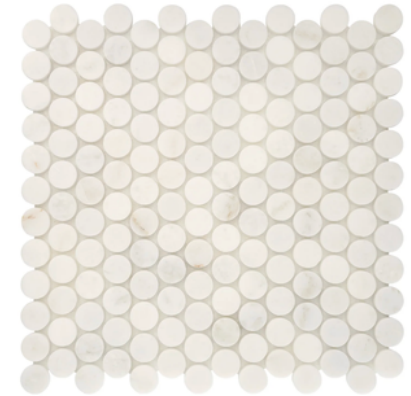
Mirror



Lighting



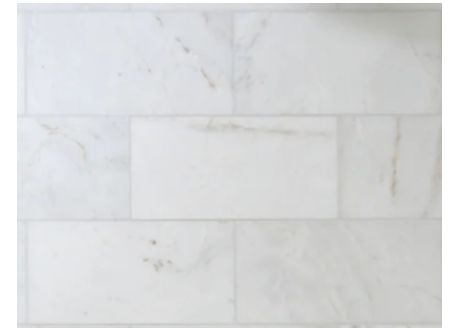
Kohler Faucet



Shower Floor Tile



Vanity with Marble countertop



Shower Wall Tile

# Bath 3

---



Mirror



Lighting



Wall Tile



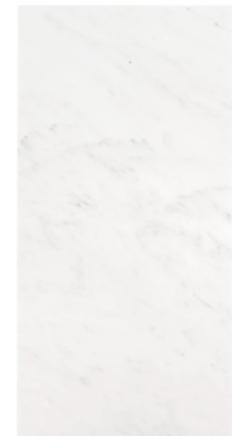
Kohler Faucet



Shower Floor Tile



Vanity with Marble countertop



Floor Tile

# Bath 4

---



Mirror



Lighting



Wall Tile



Kohler Faucet



Shower Floor Tile



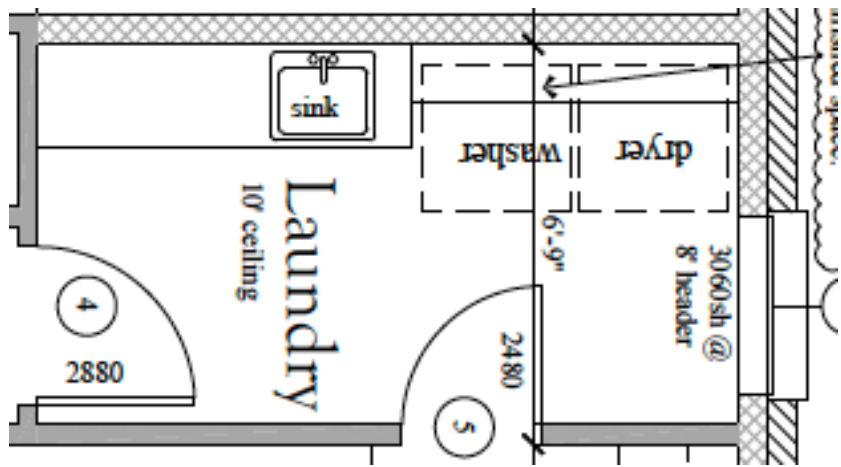
Vanity with Marble countertop



Floor Tile

# Utility

---



Wall tile



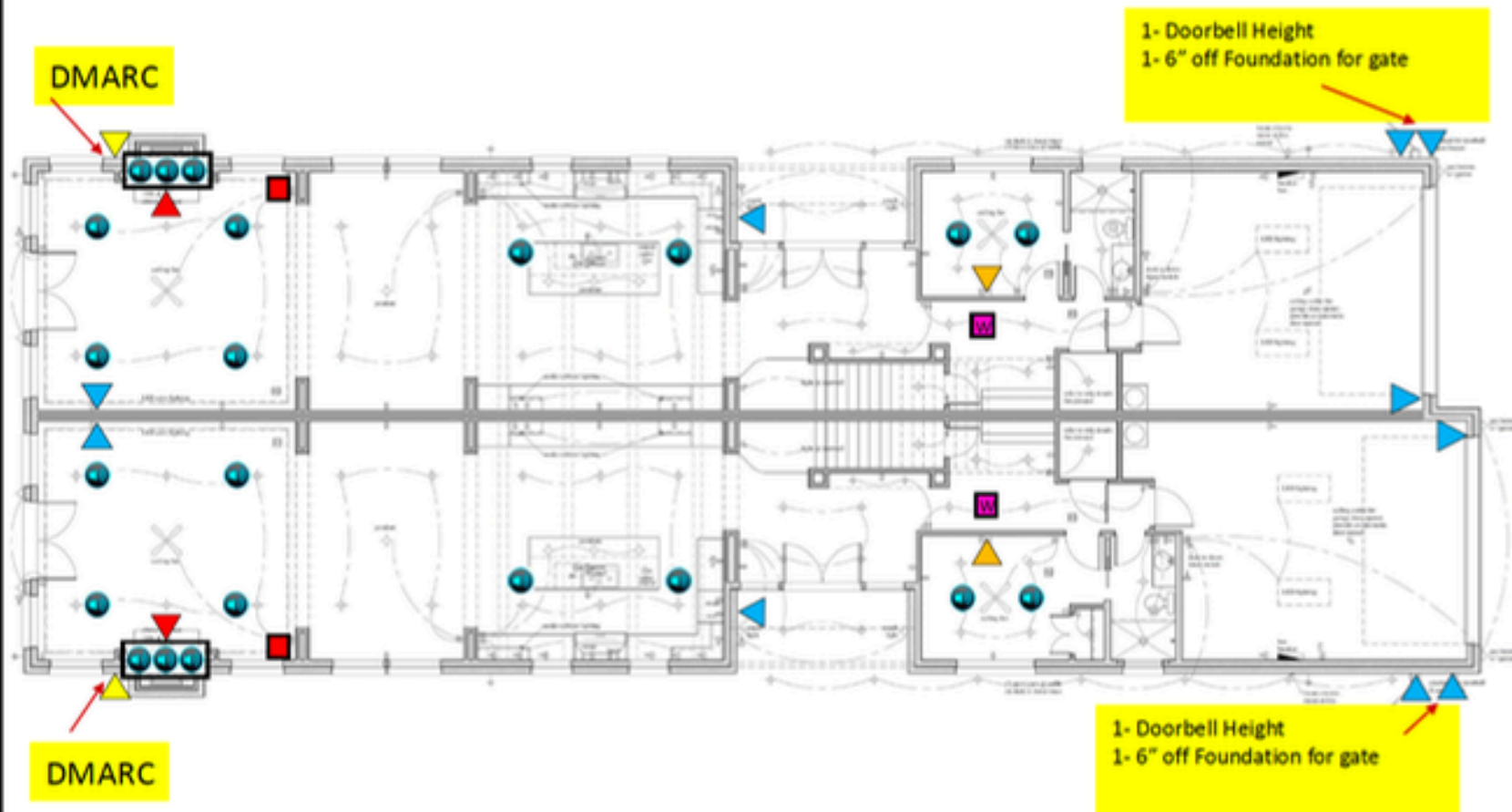
Floor Tile

# AV Prewire

4031/4033 Hawthorne

## AV Prewire

-  Phone/Data/Doorbell
-  Dmarc/ Service Provider Incoming
-  TV - (2)Cat6
-  TV - (3)Cat6
-  Shade
-  In-Ceiling Speaker
-  In-Wall Speaker
-  ICR Speaker
-  Landscape Speaker Stub out
-  In-Wall Subwoofer
-  Wireless Access Point
-  Conduit
-  AV Closet



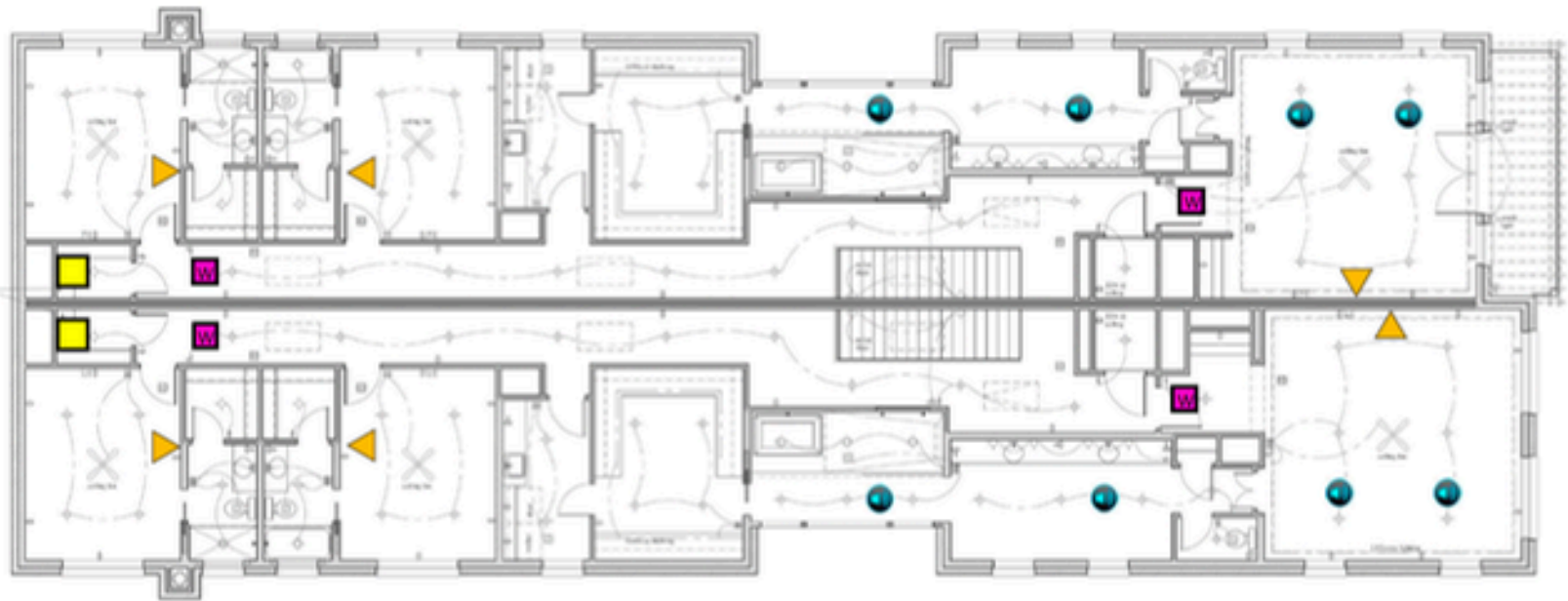
jimmy@cdaudiovideo.com

# AV Prewire

4031/4033 Hawthorne

## AV Prewire

- ▲ Phone/Data/Doorbell
- ▲ Dmarc/ Service Provider Incoming
- ▲ TV - (2)Cat6
- ▲ TV - (3)Cat6
- ▲ Shade
- In-Ceiling Speaker
- In-Wall Speaker
- ICR Speaker
- Landscape Speaker Stub out
- In-Wall Subwoofer
- Wireless Access Point
- Conduit
- AV Closet



**CDAV**

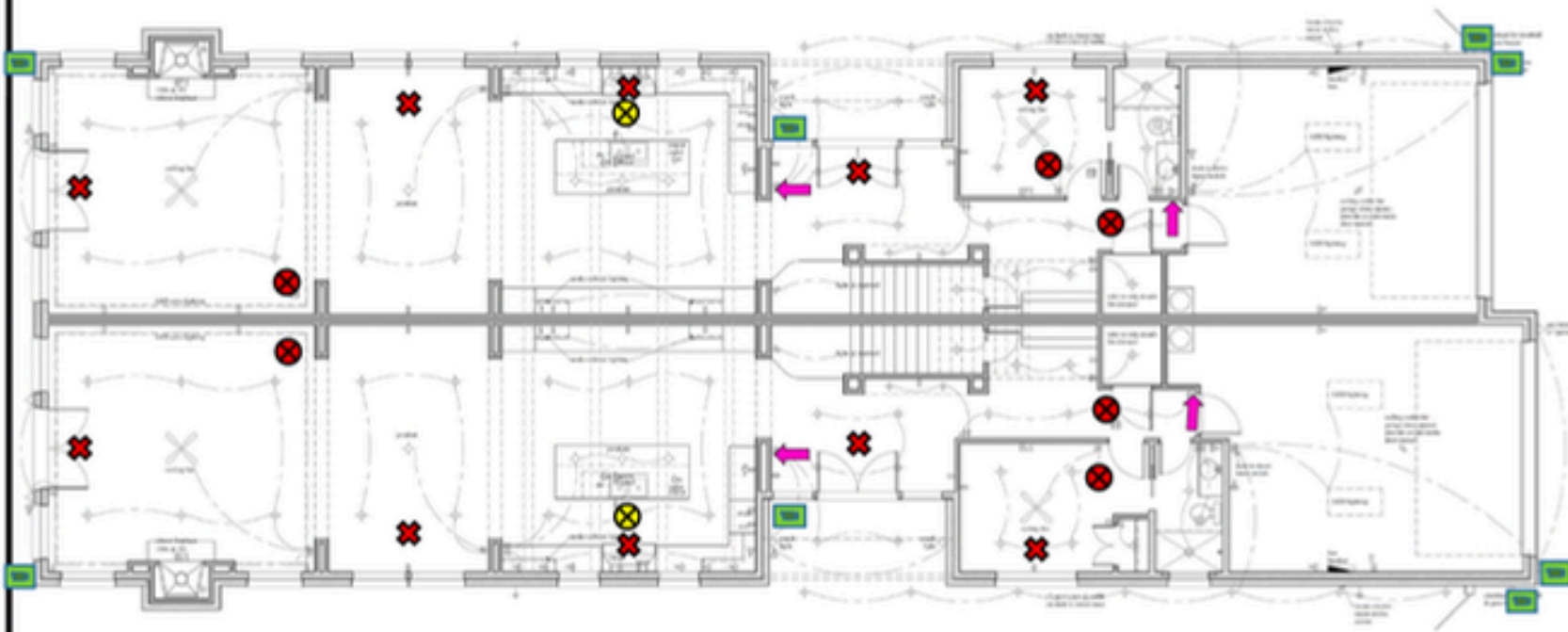
[jimmy@cdaudiovideo.com](mailto:jimmy@cdaudiovideo.com)

# SECURITY PREWIRE

4031/4033 Hawthorne

## Security Prewire

- Security Keypad
- Monitored Smoke/CO2
- Monitored Heat
- Monitored Glass Break
- Siren
- AV Closet
- Camera Location



**CDV**

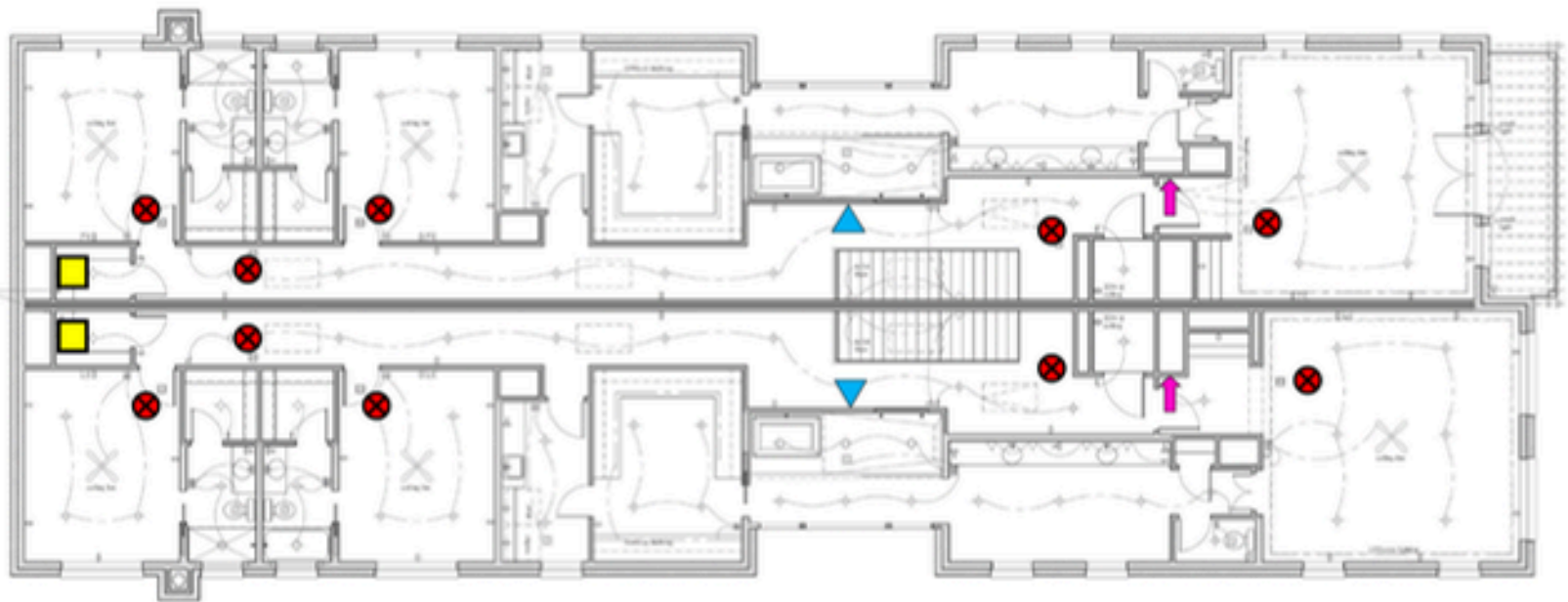
[jimmy@cdaudiovideo.com](mailto:jimmy@cdaudiovideo.com)

# SECURITY PREWIRE

4031/4033 Hawthorne

## Security Prewire

- Security Keypad
- Monitored Smoke/CO2
- Monitored Heat
- Monitored Glass Break
- Steen
- AV Closet
- Camera Location



**CDV**

[jimmy@cdaudiovideo.com](mailto:jimmy@cdaudiovideo.com)